



# MEDICAL

# INDEX MEDICAL



Mitsubishi Materials is constantly engaging ultra modern technologies in the research and development of cutting tools. Results of the research provide solutions for the ever increasing requirements of the medical industry.

## *HIP-SYSTEM*

---

3

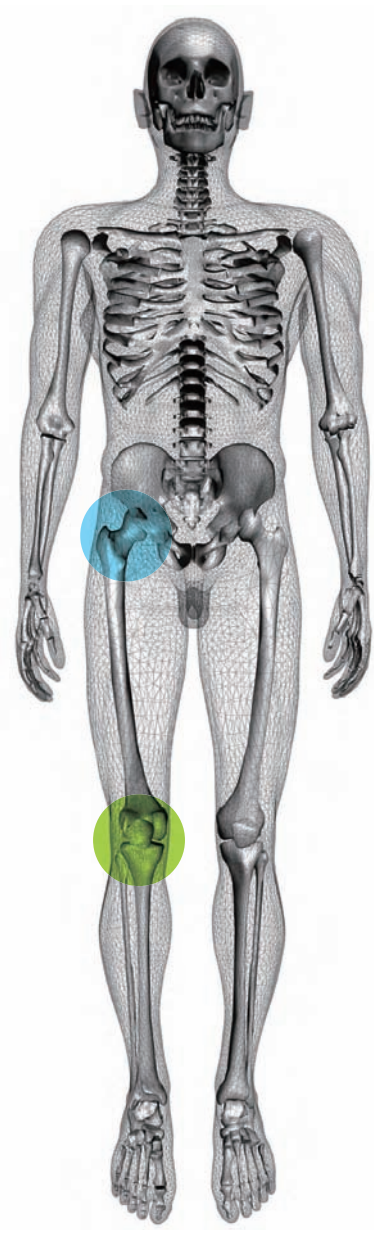
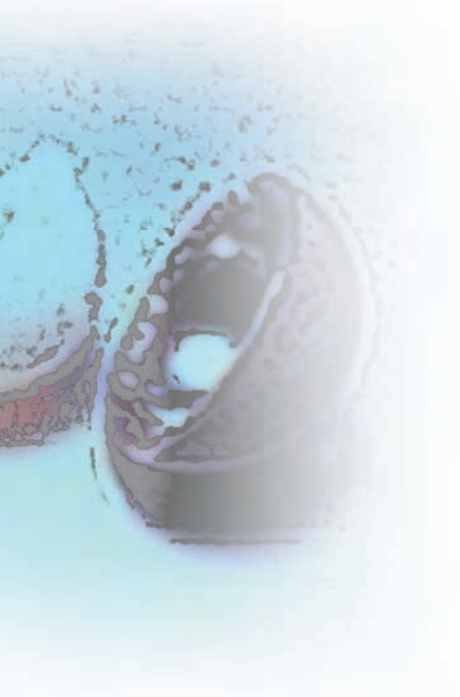


## *BONE PLATES*

---

7





## KNEE-SYSTEM

---

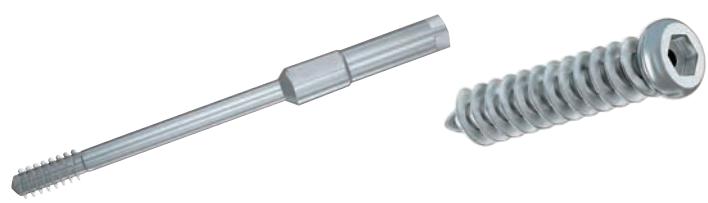
5



## SCREWS

---

9



# HIP-SYSTEM

Work materials [Co-Cr alloy, Titanium alloy, Stainless steel]

## External turning

PVD coated inserts which have high heat resistance and wear resistance improve surface finish in medical component manufacturing.



## Drilling

Solid carbide drills which have better chip disposal and sharpness achieve longer tool life resulting from the reduction of heat being generated.



**MWS** Drill



**GY** Series



## Drilling

Solid carbide drills with cutting edge sharpness and optimized geometry reduce burr formation and improve hole accuracy in stainless steel and titanium alloy machining.



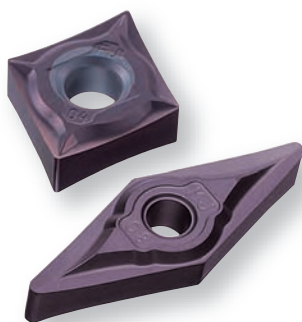
## External turning

PVD coated inserts which have high heat resistance and wear resistance improve surface finish in medical component manufacturing.



## Internal sphere turning

Chip breakers for heat resistant alloys show stable chip control performance when machining depths of cut may vary.



**VP05RT/VP10RT**  
**FJ/MJ Breaker**



**VF-45VB**

# **KNEE-SYSTEM**

Work materials [Co-Cr alloy, Titanium alloy, Stainless steel]



## Surface milling

Solid carbide end mills with variable helix reduce vibration and provide stable tool life in machining of complicated shapes in stainless steel and titanium alloy.



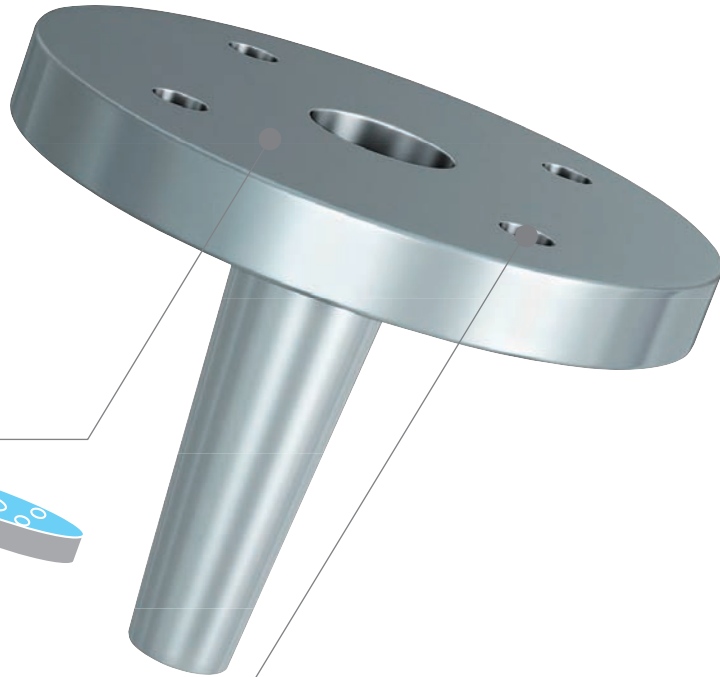
**VF-HVRB**



**VF-45VB**

## Face milling

Solid carbide end mills which have better chip disposal and better vibration resistance achieve longer tool life and higher productivity.



## Drilling

Solid carbide drills with cutting edge sharpness and optimized geometry reduce burr formation and improve hole accuracy in stainless steel and titanium alloy machining.



**MMS Drill**



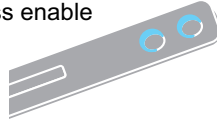
**MWS Drill**

# **BONE PLATES**

Work materials [Titanium alloy, Stainless steel]

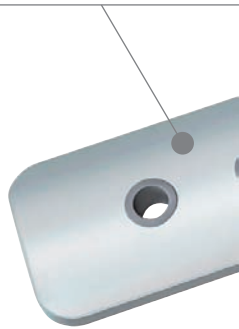
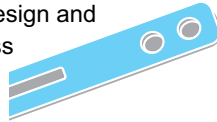
## Chamfering

Solid carbide chamfering cutters with cutting edge sharpness enable stable machining of stainless steel and titanium alloy.



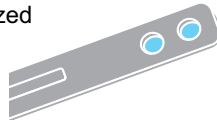
## Surface milling

Solid carbide end mills with better vibration resistance design and cutting edge sharpness give stability in machining of complicated shapes in stainless steel and titanium alloy.



## Drilling

Solid carbide drills with cutting edge sharpness and optimized geometry reduce burr formation and improve hole accuracy in stainless steel and titanium alloy machining.

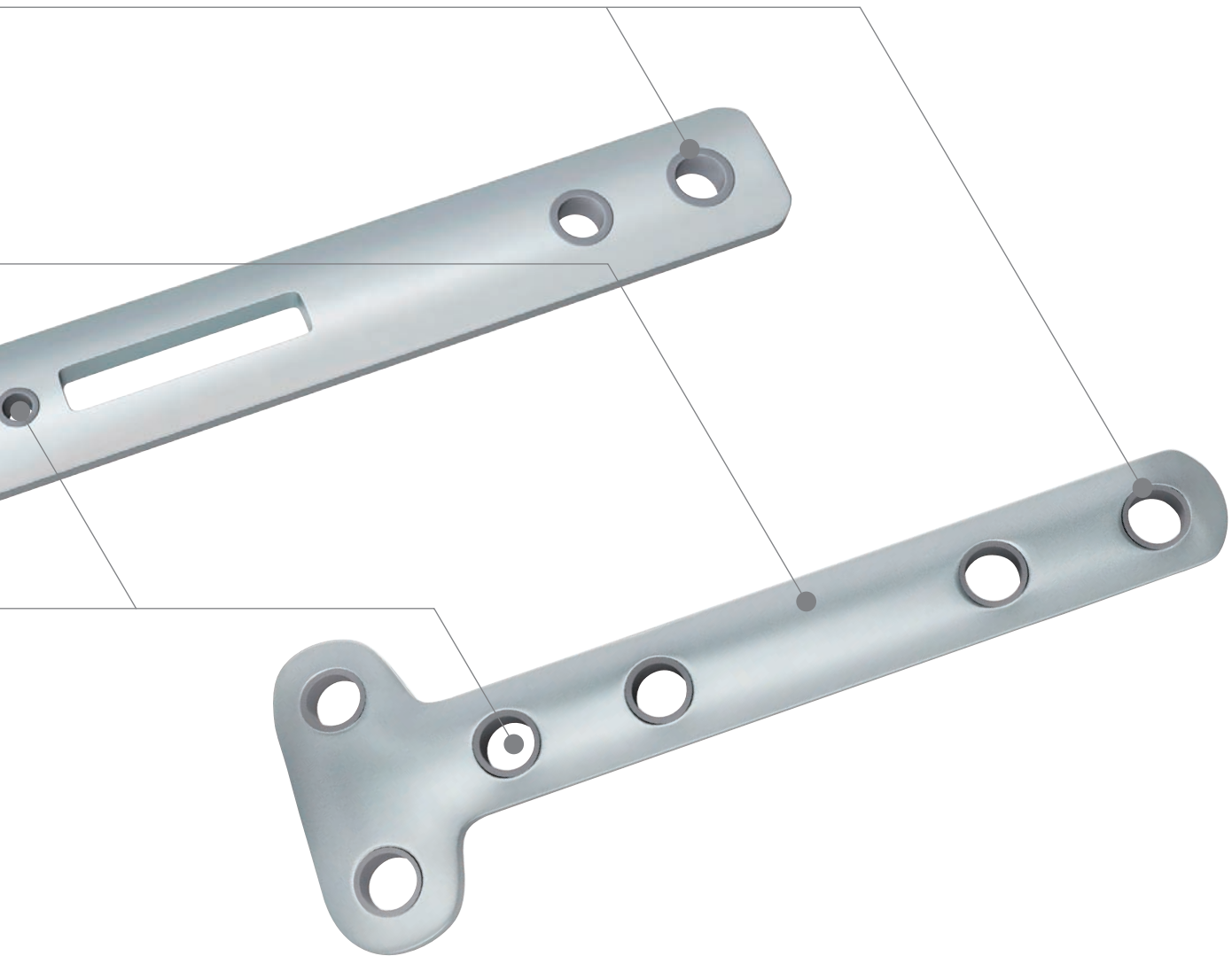


**VF-45VB**



**VF-2WB**





***MMS Drill***



***MWS Drill***



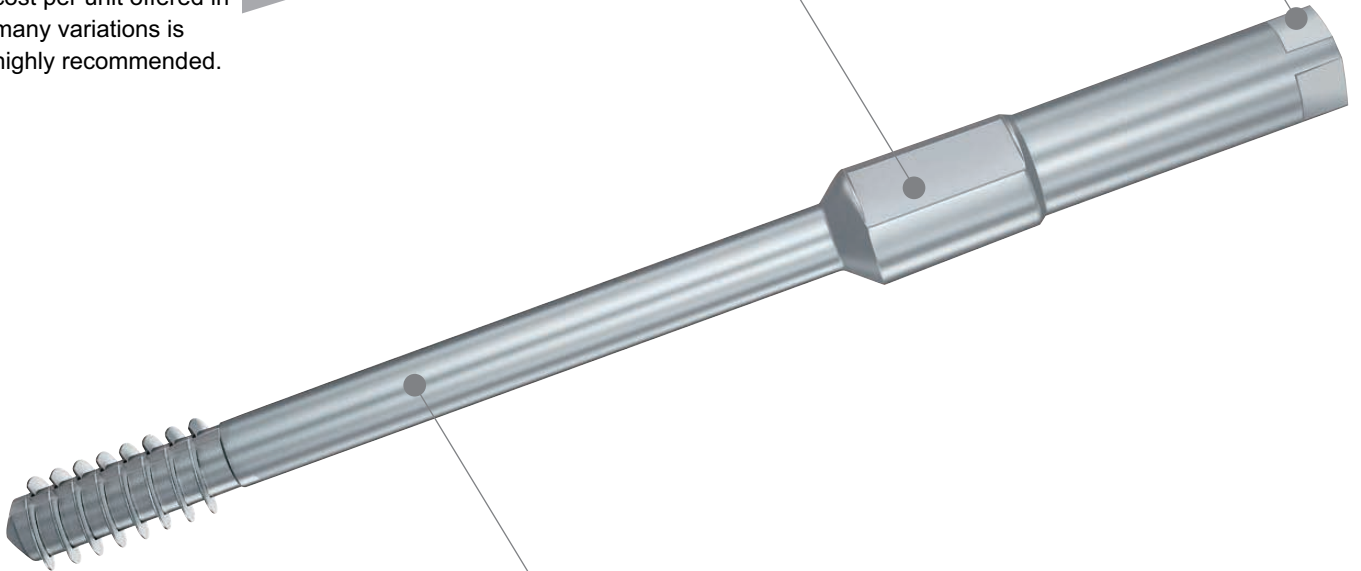
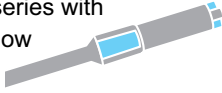
***VC-2C***

# **SCREWS**

Work materials [Titanium alloy, Stainless steel]

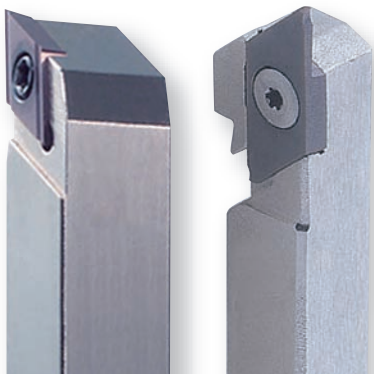
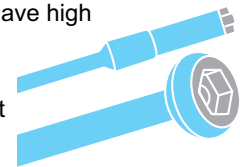
## Face milling

Solid carbide end mill series with high performance and low cost per unit offered in many variations is highly recommended.

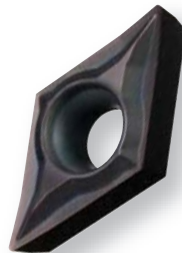


## External turning

PVD coated inserts which have high heat resistance and wear resistance improve surface finish of medical component manufacturing.



**Small Tools**



**SMG  
Breaker**



**MSTAR**

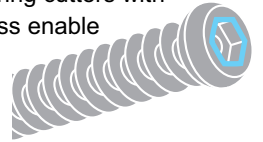
## Face machining

PVD coated inserts which have high heat resistance and wear resistance improve surface finish of medical component manufacturing.



## Chamfering

Solid carbide chamfering cutters with cutting edge sharpness enable stable machining of stainless steel and titanium alloy.



## Deep drilling

Solid carbide drills which have better chip disposal and coolant capacity are suitable for deep hole drilling in stainless steel and titanium alloy.



**WSTAR**  
*Super long drill*

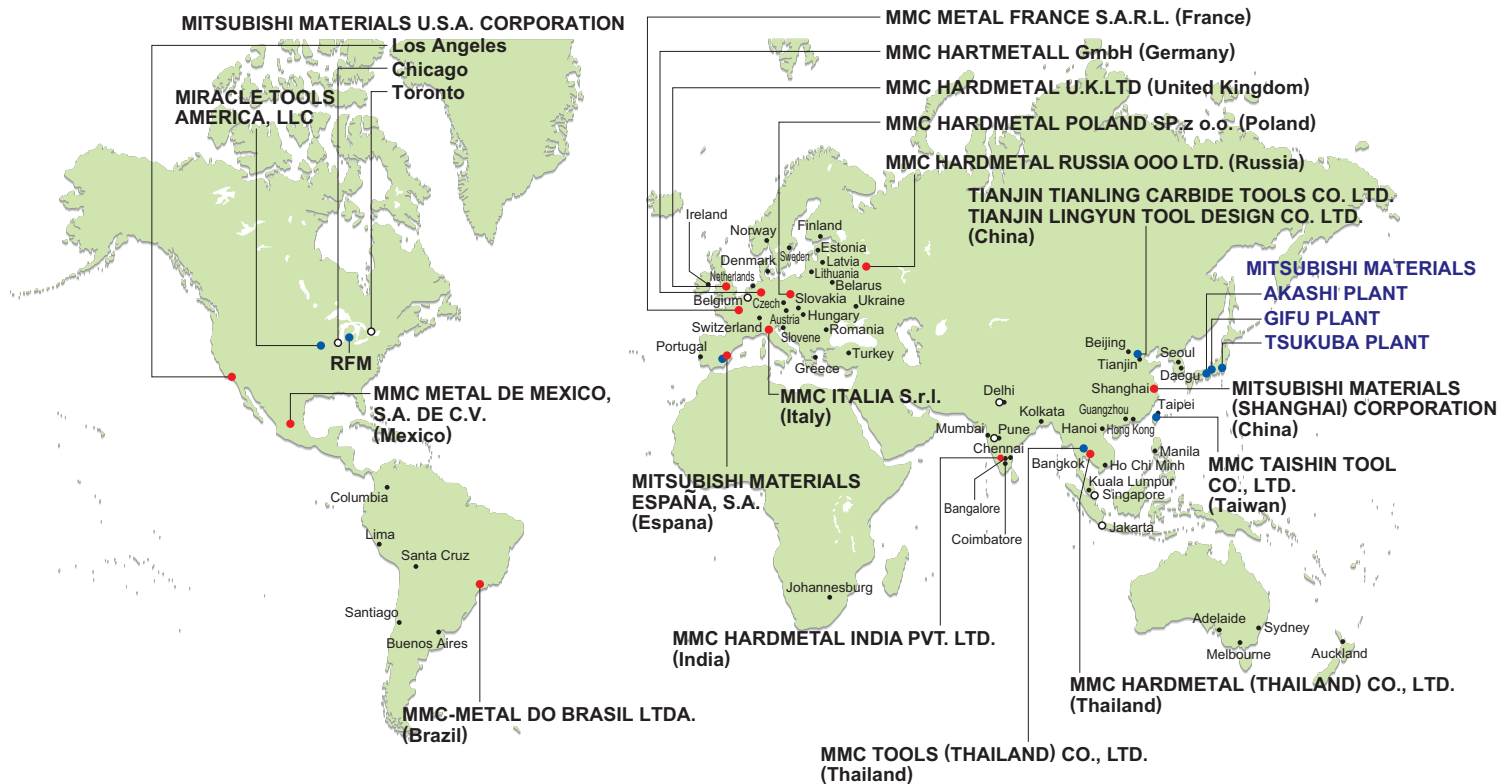


**MGS** Drill



**VC-2C**

# MITSUBISHI Global Network



- Sales Office
- Factory
- Representative Office
- Agency



**JAPAN**  
**MITSUBISHI MATERIALS CORPORATION**  
 Area Marketing & Sales Operations  
 KFC bldg., 8F, 1-6-1, Yokoami, Sumida-ku, Tokyo 130-0015 Japan  
 TEL +81-3-5819-8771~8772 FAX +81-3-5819-8773~8774

**USA**  
**MITSUBISHI MATERIALS U.S.A. CORPORATION**  
 11250 Slater Avenue, Fountain Valley, CA 92708, U.S.A  
 TEL. +1-714-352-6100 FAX +1-714-668-1320

**MEXICO**  
**MMC METAL DE MEXICO, S.A. DE C.V.**  
 Av. La Cañada No.16, Parque Industrial  
 Bernardo Quintana, El Marques, Queretaro, CP76246 Mexico  
 TEL +52-442-221-6136 FAX +52-442-221-6134

**BRAZIL**  
**MMC-METAL DO BRASIL LTDA.**  
 Rua Cincinato Braga, 340, 13° Andar,  
 Bela Vista-CEP 01333-010, São Paulo-SP, Brazil  
 TEL +55-11-3506-5600 FAX +55-11-3506-5688

**CHINA**  
**MITSUBISHI MATERIALS (SHANGHAI) CORPORATION**  
 Room 3911, UNITED PLAZA 1468, Nanjing Road West,  
 Shanghai, 200040 China  
 TEL +86-21-6289-0022 FAX +86-21-6279-1180

**THAILAND**  
**MMC HARDMETAL (THAILAND) CO., LTD.**  
 8th Floor Regent House Building, 183 Rajdamri Road,  
 Lumpini, Pathumwan, Bangkok 10330, Thailand  
 TEL +66-2-651-9800 FAX +66-2-651-9803

**INDIA**  
**MMC HARDMETAL INDIA PVT. LTD.**  
 No.10, 1st Floor, 80 Feet Road, R.M.V 2nd Stage,  
 Bangalore - 560094 Karnataka India  
 TEL +91-80-2351-6083 FAX +91-80-2351-6080

**GERMANY**  
**MMC HARTMETALL GmbH**  
 Comeniusstr. 2, 40670, Meerbusch, Germany  
 TEL +49-2159-91890 FAX +49-2159-918966

**UNITED KINGDOM**  
**MMC HARDMETAL U.K. LTD**  
 Mitsubishi House, Galena Close, Tamworth,  
 B77 4AS, U.K.  
 TEL +44-1827-312312 FAX +44-1827-312314

**FRANCE**  
**MMC METAL FRANCE S.A.R.L.**  
 6, rue Jacques Monod, 91400, Orsay, France  
 TEL +33-1-69 35 53 53 FAX +33-1-69 35 53 50

**SPAIN**  
**MITSUBISHI MATERIALS ESPAÑA, S.A.**  
 Calle Emperador 2, 46136, Museros, Valencia, Spain  
 TEL +34-96-144-1711 FAX +34-96-144-3786

**ITALY**  
**MMC ITALIA S.r.l.**  
 V.le delle Industrie 2, 20020 Arese (Mi), Italy  
 TEL +39-02 93 77 03 1 FAX +39-02 93 58 90 93

**RUSSIA**  
**MMC HARDMETAL RUSSIA OOO LTD.**  
 ul. Bolschaya Semenovskaya 11, bld. 5,  
 107023 Moscow, Russia  
 TEL +7-495-72558-85 FAX +7-495-98139-73

**POLAND**  
**MMC HARDMETAL POLAND Sp. z o.o.**  
 Al. Armii Krajowej 61, 50-541 Wroclaw, Poland  
 TEL +48 71 335-16-20 FAX +48 71 335-16-21